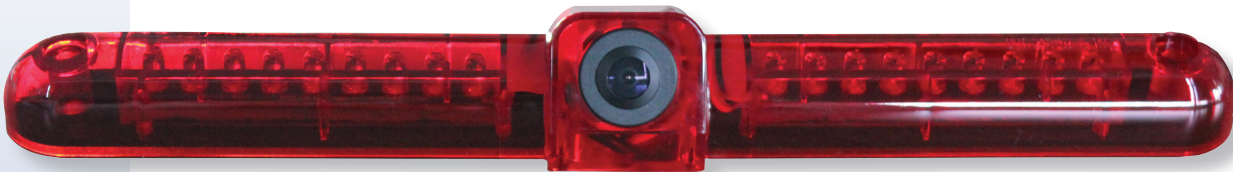




Product Specification - The **SmarTruck HD** Part No CA030 Universal Third Brake Light Camera delivers a sharp wide-angle image to the driver and provides outstanding visibility. This camera mounts to any flat surface making for a very clean and easy installation. The IP68 water intrusion rating means it is waterproof under severe conditions. The camera includes mounting gasket, wiring and mounting hardware.



Camera Features

150° Viewing Angle

Ultra wide angle



Night Vision

With very little ambient light provides a great picture at night



IP68 Rating

Protected against complete, continuous submersion in water

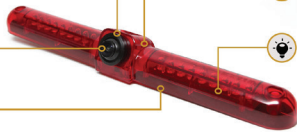


Brake Light Housing

Replaces the third brake light, for a factory-like install



Brake Lights Included



- High Resolution Sensor 1/3" (CMOS) Complementary Metal–Oxide–Semiconductor
- 150° Diagonal Field of View
- High-impact plastic polymer housing
- Electronic Auto Iris Control
- Auto White Balance
- Back Light Compensation (BLC)
- Vibration Rating=10G
- Surface-mounted third brake light type camera
- "T" Slot adjustable monitor mount

Product specifications subject to change on 60-day notice.

Camera Specs	
Part No.	CA030
Camera type	1/3" color camera
Video System	
Effective Pixel Array	976(H)*496(V)
Image Sensor Pixel Size	4.80 um x3.73 um
Power Supplier	DC9-16V
Video Angle	150 degree
Power Consumption	<50mA@12V
Reverse Voltage Protected	yes
Dynamic Range	63.2[dB]
Balance	Auto
Exposure Control	Auto
Gain Control	Auto
Shutter Mode	Electronic rolling shutter
Min. Illumination	0.3Lux
S/N ratio	More than 48 Db
Frame Rate	30fps
Video Source	1.0VP-P 75Ω
Resolution	700TVL
Waterproof	IP68
Viewing Angle	150°
Lens Construction	4G
Operating Temp.	-40°C ~ +70°C RH 90% MAX
Storing Temp.	-40°C ~ +80°C RH 90% MAX